

ETS SERIES

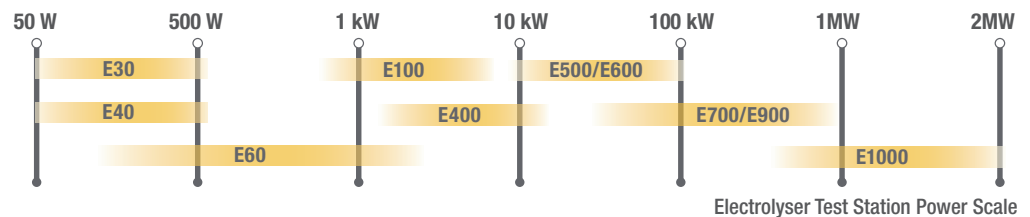
Electrolyser

Cell and Stack Test Stations



E1000 Test Station

Photo: RU Limbach



- Power ranges from 50W to 2MW+
- PEM, AEM and Alkaline versions available
- Featuring Emerald™ control software
- Fully automated for unattended operation
- Inert gas purge system
- Available CE certificate of conformity

ETS Features

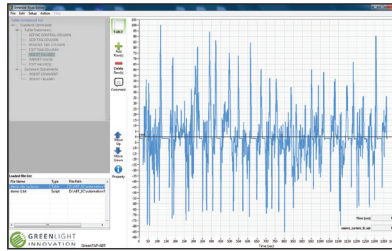
- DI water or alkaline solution
- Water and gas separation on outlet
- Pressurized control on both anode and cathode
- Automatic nitrogen purge on shutdown
- Stack pre-pressurization

Additional options include:

- Cathode water recirculation
- Gas chromatography
- Impedance spectroscopy
- Anode and cathode product gas analysers
- In-line oxygen and hydrogen gas sampling
- Programmable power supplies up to multi-MW

Greenlight's ETS series sets the industry standard for both PEM and alkaline electrolyser testing.

Emerald™ : Our flexible control software features a user-friendly interface, and is enhanced with our proprietary automation capability. The flexible **Emerald™** scripting language allows complex script assembly within minutes for all types of users; from novices to experts.



Load Cycle Importer Graph



E400 Test Station

Specifications

Includes 3 levels of safety:

1. Hard-wired interlocks with emergency stop
2. Factory software interlocks
3. User-configurable software interlocks (warning high/low alarms and shut-down high/low alarms)
 - N₂ purge
 - H₂ sensor
 - Optional safety enclosure

POWER RANGE	50W - 2MW+
WATER FLOWS	Anode and cathode DI water supply with metering pumps
PRESSURE CONTROL	Up to 50 bar (725 psi), with pre-pressurization
STACK COOLING	Anode and cathode DI water cooling with recirculation
POWER SUPPLY	Constant current, constant voltage up to 10,000A and 1000V+
DATA ACQUISITION SYSTEM	Cell voltage and temperature
DIMENSIONS (L x W x H) approximate	Various frame sizes depending on application

Electrolyser Test Hardware Features

Features include:

- Unique O-ring sealing technology for operating pressures up to 50barg
- Designed for active areas of 50cm²
- Anodized aluminum end plates with titanium internal plates
- Optional electrical cartridge heating



PEM Electrolyser Research Hardware

© Greenlight Innovation Corporation, Burnaby, B.C. Canada. All specifications and illustrations contained in this brochure are based on the latest product information available at the time of printing. Greenlight reserves the right to make changes at any time without notice in materials, equipment, specifications and models. Printed in Canada.

101-8339 Eastlake Drive
 Burnaby, BC Canada V5A 4W2
 tel +1.604.676.4000
 fax +1.604.676.4111
 sales@greenlightinnovation.com

The Test and Automation Specialists: greenlightinnovation.com

