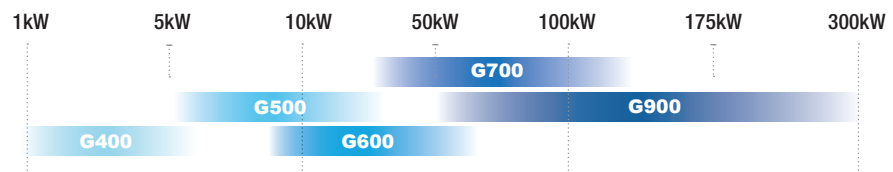


G400 • G500 • G600
G700 • G900

PEM FUEL CELL

Stack Test Stations



- Emerald™ control software for fully automated, unattended operation
- Comprehensive safety features
- Expandable with additional I/O and diagnostic tools
- Multiple humidification technologies available
- Resistive or regenerative loads available
- Available CE certificate of conformity
- Fuel cell engine test features available

Specifications



G400

G500

G600

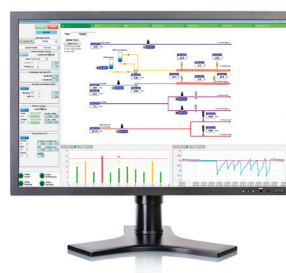
G700

G900

APPROXIMATE POWER RANGE	1 - 6 kW	6 - 20 kW	8 - 60 kW	25 - 125 kW	50 - 300 kW
GAS FLOWS	100:1 turndown MFC's	100:1 turndown MFC's	100:1 turndown MFC's	custom ranges available	custom ranges available
Standard anode flow range	1.5 - 150 nlpm	1.25 - 250 nlpm; available to 750 nlpm	20 - 2,000 nlpm	30 - 3,000 nlpm	50 - 5,000 nlpm
Standard cathode flow range	4 - 400 nlpm	3.75 - 750 nlpm; available to 1,250 nlpm	35 - 3,500 nlpm	80 - 8,000 nlpm	100 - 10,000 nlpm
GAS MIXING Anode and Cathode Outlets	automated reformate simulation and gas mixing available				
GAS HUMIDIFICATION TECHNOLOGY	numerous humidification technologies available including Rapid Response™				
Dew point control	up to 90°C † (194°F)†				
Gas temperature	up to 110°C † (230°F)†				
Dry gas by-pass	optional; with automatic control				
LIQUID STACK COOLING	up to 95°C (203°F)†	up to 95°C (203°F)†	up to 95°C (203°F)†	up to 95°C (203°F)†	up to 90°C (194°F)†
BACK PRESSURE CONTROL	0.05 - 3 barg† (45psig)†				
LOAD BANK Maximum load, current, voltage	water cooled, up to 6kW	water cooled, up to 20kW	water cooled, or regenerative available	water cooled, or regenerative available	regenerative
CELL VOLTAGE MONITORING Standard number of channels	up to 800 channels				
DIMENSIONS Not including optional load banks	1582 x 1367 x 1827 mm (62 x 54 x 72 in)	2819 x 1168 x 2261 mm (111 x 46 x 89 in)	2823 x 1461 x 2238 mm (112 x 58 x 88 in)	3500 x 1600 x 2300 mm (137 x 63 x 90 in)	3500 x 1600 x 2300 mm (137 x 63 x 90 in)

† Dependent on actual operating conditions - higher temperature, pressure options available.

Emerald™ : Our flexible control software features a user-friendly interface, and is enhanced with our proprietary automation capability. The flexible **Emerald™** scripting language allows complex script assembly within minutes for all types of users; from novices to experts.



© Greenlight Innovation Corporation, Burnaby, B.C. Canada. All specifications and illustrations contained in this brochure are based on the latest product information available at the time of printing. Greenlight reserves the right to make changes at any time without notice in materials, equipment, specifications and models. Printed in Canada.

104A - 3430 Brighton Avenue
Burnaby, B.C. Canada V5A 3H4
tel +1.604.676.4000
fax +1.604.676.4111
sales@greenlightinnovation.com

The Test and Automation Specialists: **greenlightinnovation.com**

