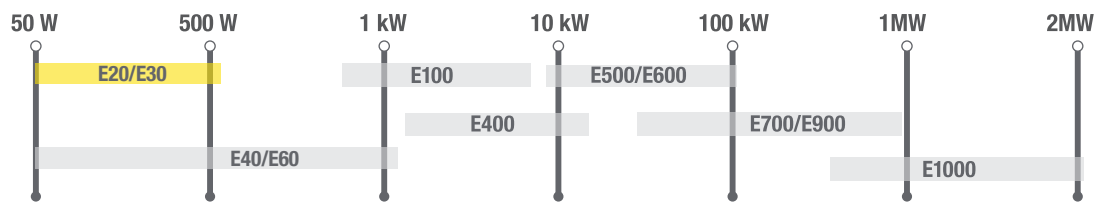


# Electrolyser

## Single Cell Test Station



E20 ETS Single Cell Test Station  
*PEM and AEM Versions Available*



Electrolyser Test Station Power Scale

- Power ranges from 50W to ~1KW
- PEM and Alkaline versions available
- Featuring Emerald™ control software
- Fully automated for unattended operation
- Easily expandable for additional I/O and diagnostic tools
- Inert gas purge system
- Available CE certificate of conformity

**E20 ETS**

# E20 ETS Features

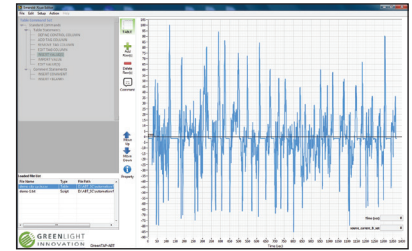
- Anode DI water supply
- DI water and gas separation on outlet
- Pressurized control on anode and cathode
- Automatic nitrogen purge on shutdown

#### Additional options include:

- Pre-pressurization
- Impedance spectroscopy
- Anode and cathode product gas analysers
- In-line oxygen and hydrogen gas sampling

Greenlight's ETS series sets the industry standard for both PEM and AEM electrolyser testing.

**Emerald™**: Our flexible control software features a user-friendly interface, and is enhanced with our proprietary automation capability. The flexible **Emerald™** scripting language allows complex script assembly within minutes for all types of users; from novices to experts.



Load Cycle Importer Graph

#### Includes 3 levels of safety:

1. Hard-wired interlocks with emergency stop
2. Factory software interlocks
3. User-configurable software interlocks (warning high/low alarms and shut-down high/low alarms)
  - N<sub>2</sub> purge
  - H<sub>2</sub> sensor
  - Optional safety enclosure

## Specifications

POWER RANGE	50W - 1kW
WATER FLOWS	Anode DI water supply with automated flow control
PRESSURE CONTROL	Up to 6 bara (87 psia), with optional pre-pressurization
STACK COOLING	Anode DI water cooling with recirculation
POWER SUPPLY	Constant current, constant voltage with automated control
DATA ACQUISITION SYSTEM	Cell voltage and temperature
DIMENSIONS (L x W x H) approximate	712 x 1330 x 1945 mm (28 x 52.1 x 76.6 in)

## Optional Electrolyser Test Hardware

#### Features include:

- Unique O-ring sealing technology for operating pressures up to 50bara
- Designed for MEAs of 50cm<sup>2</sup>
- Anodized aluminum end plates with titanium internal plates (optional coatings available)
- Designed for horizontal or vertical orientation
- Optional electrical cartridge heating



PEM Electrolyser Research Hardware

© Greenlight Innovation Corporation, Burnaby, B.C. Canada. All specifications and illustrations contained in this brochure are based on the latest product information available at the time of printing. Greenlight reserves the right to make changes at any time without notice in materials, equipment, specifications and models. Printed in Canada.

101-8339 Eastlake Drive  
Burnaby, BC Canada V5A 4W2  
tel +1.604.676.4000  
fax +1.604.676.4111  
sales@greenlightinnovation.com

The Test and Automation Specialists: [greenlightinnovation.com](http://greenlightinnovation.com)

